




Creating amazing experiences for customers



 1 click Automation

 APIs

 Process Mapping

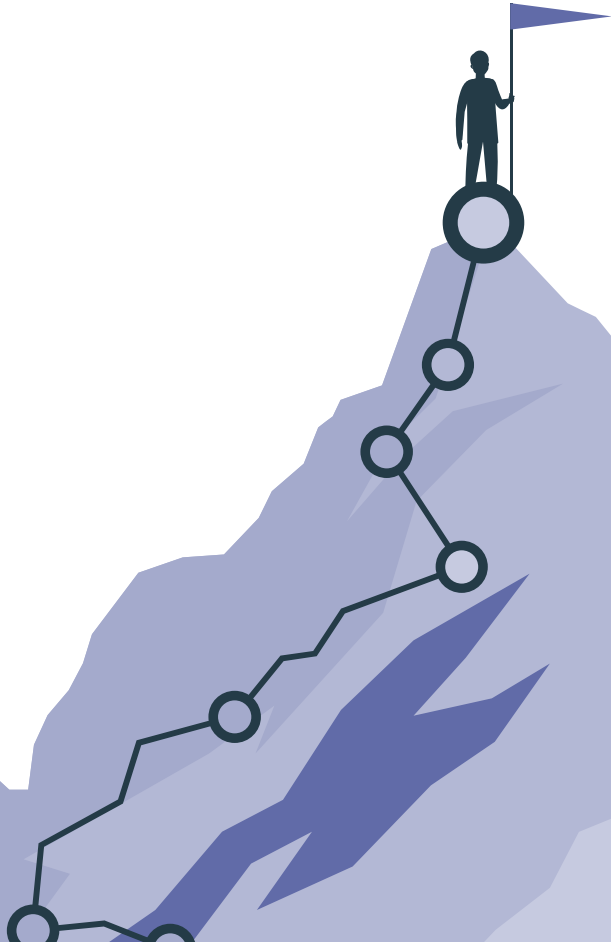
 Conversational Flow

 Data Extraction

 NLP



Leading Swiss Conversational automation solution



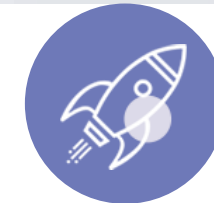
**AI Leadership
No.1 ranking**

With 88.3%
avg. accuracy rate
(source: [SNIPS](#))



**Customer Centric
❤️ by customers**

With 4.9/5 in
G2 reviews



**Enterprise Focus
Millions of
requests
Automated**

Across travel, banking and
insurance, logistics,
healthcare, retail



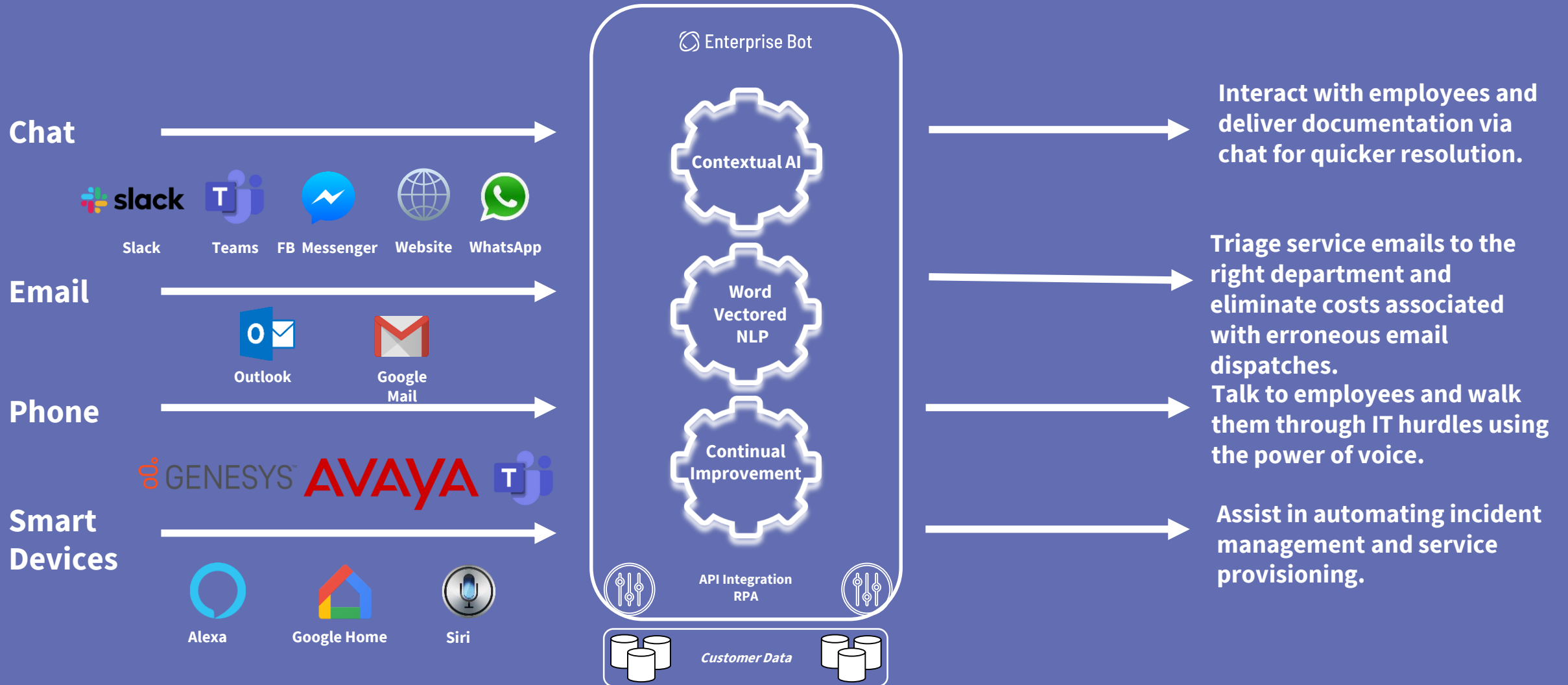
No one wakes up in the morning thinking they want to chat with a bot 😞



So how can companies move the needle?



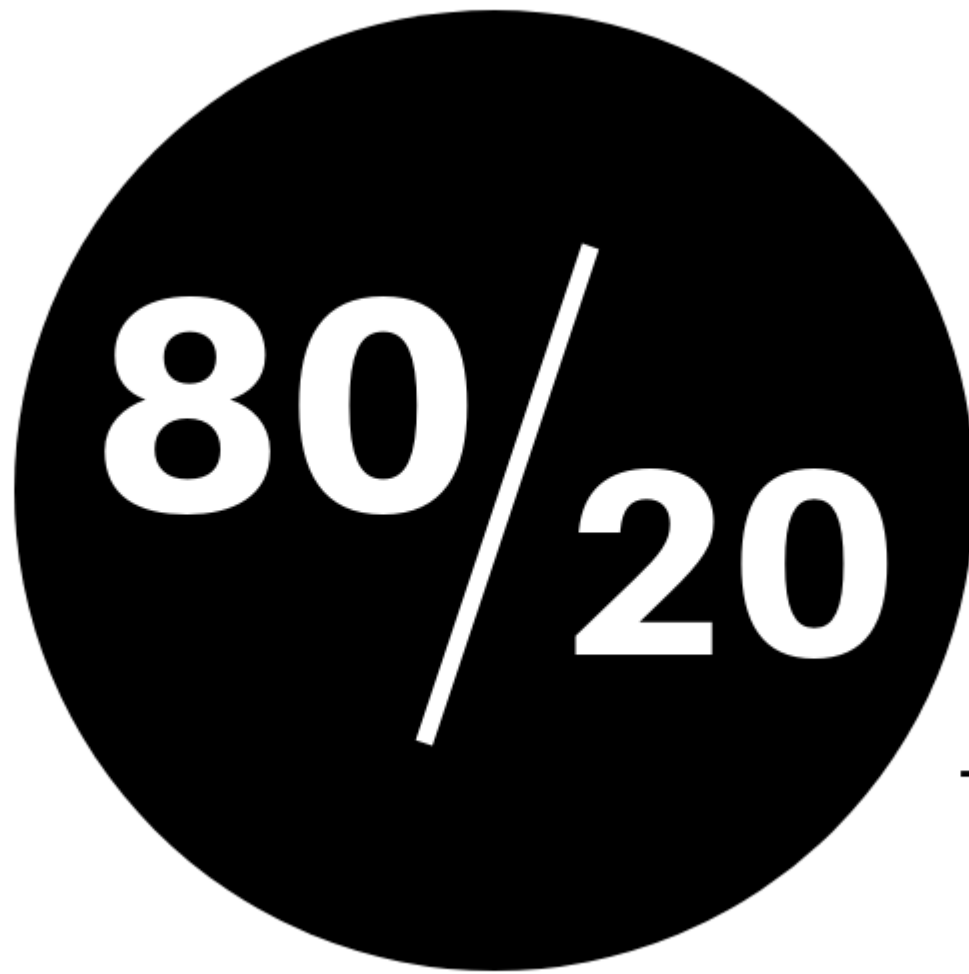
Omni-Channel Support





But how do you achieve this with 10% the effort?

The



Rule

So how do we achieve this?

The screenshot displays the Enterprise Bot interface. At the top, there is a navigation bar with a 'Wordline' profile, a settings icon, and two buttons: '+ Create bot' and 'Add pre-built intents'. Below this is a sidebar with various icons. The main content area is titled 'DocBrain' and features a 'Website Extraction' section. This section includes a progress bar and a text prompt: 'Let's begin indexing your website contents to create your intelligent virtual assistant.' Below the prompt is a form labeled 'Enter your sitemap URL' with an information icon and a link to 'How to find a sitemap?'. The form contains the example text 'e.g. https://www.docbrain.ai/sitemap.xml'. A 'Note' section follows, listing three bullet points: 'The current version of DocBrain supports up to 1000 unique pages.', 'Depending on the size of your website, the data extraction phase for DocBrain can take up to 48 hours.', and 'We ask for the sitemap XML and not the normal URL as this substantially increases the processing speed of indexing.' A 'Start indexing' button is located at the bottom right of the form area.

Wordline

+ Create bot

Add pre-built intents

DocBrain

Website Extraction

Let's begin indexing your website contents to create your intelligent virtual assistant.

Enter your sitemap URL ⓘ [How to find a sitemap?](#)

e.g. https://www.docbrain.ai/sitemap.xml

Note :

- The current version of DocBrain supports up to **1000 unique pages**.
- Depending on the size of your website, the data extraction phase for DocBrain can take up to **48 hours**.
- We ask for the **sitemap XML** and not the normal URL as this substantially increases the processing speed of indexing.

Start indexing

Create Knowledge graphs from the data

SBB English + Create bot ★ Add pre-built intents Go live RM Ravina Mutha

DocBrain

More actions All URLs Save + Add URL Update status

<input type="checkbox"/>	List of webpages ⓘ	Status	On/Off ⓘ	
<input type="checkbox"/>	https://www.sbb.ch/en/station-services/at-the[...]ions/station.3227.netstal.html	✓	🟢	⌵
<input type="checkbox"/>	https://www.sbb.ch/en/station-services/at-the[...]chaux-de-fonds-les-forges.html	✓	🟢	⌵
<input type="checkbox"/>	https://www.sbb.ch/en/station-services/at-the[...]tour-de-treme-ronclina-la.html	✓	🟢	⌵
<input type="checkbox"/>	https://www.sbb.ch/en/station-services/at-the[...]ation.8160.langenthal-asm.html	✓	🟢	⌵
<input type="checkbox"/>	https://www.sbb.ch/en/station-services/at-the[...]r-de-treme-parqueterie-la.html	✓	🟢	⌵
<input type="checkbox"/>	https://www.sbb.ch/en/station-services/at-the[...]station.4209.colombier-ne.html	✓	🟢	⌵
<input type="checkbox"/>	https://www.sbb.ch/en/station-services/at-the[...]ns/station.2170.aarau-ava.html	✓	🟢	⌵
<input type="checkbox"/>	https://www.sbb.ch/en/station-services/at-the[...]s/station.4415.busswil-be.html	✓	🟢	⌵
<input type="checkbox"/>	https://www.sbb.ch/en/station-services/at-the[...]tation.6280.herisau-wilen.html	✓	🟢	⌵
<input type="checkbox"/>	https://www.sbb.ch/en/station-services/at-the[...]n.2248.bremgarten-obertor.html	✓	🟢	⌵
<input type="checkbox"/>	https://www.sbb.ch/en/station-services/at-the[...]ation.8458.alpnachstad-pb.html	✓	🟢	⌵
<input type="checkbox"/>	https://www.sbb.ch/en/station-services/at-the[...]innertkirchen-unterwasser.html	✓	🟢	⌵

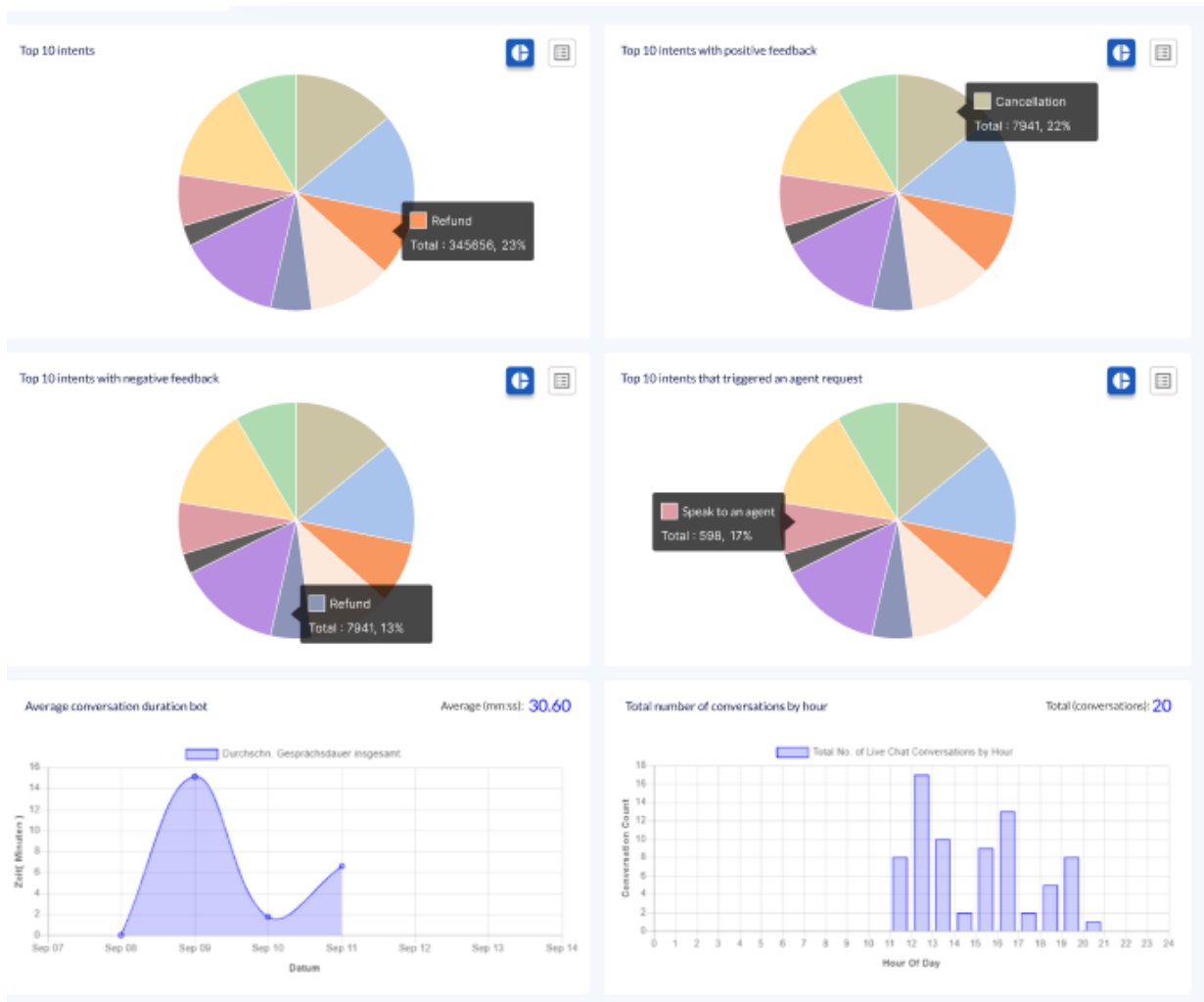
4801 Total 1 of 241

4795/4801 pages

URL
https://www.sbb.ch/content/dam/internet/system/sitemap/internet-sbb-en.xml

Indexing status	Last indexed on
Complete	28/09/2022, 12:26
Created on	Created by
04/08/2022, 16:52	Ravina Mutha
Last extraction	Modified by
28/09/2022, 12:25	Ravina Mutha

Get insights about sentiment



Get insights about your top requests

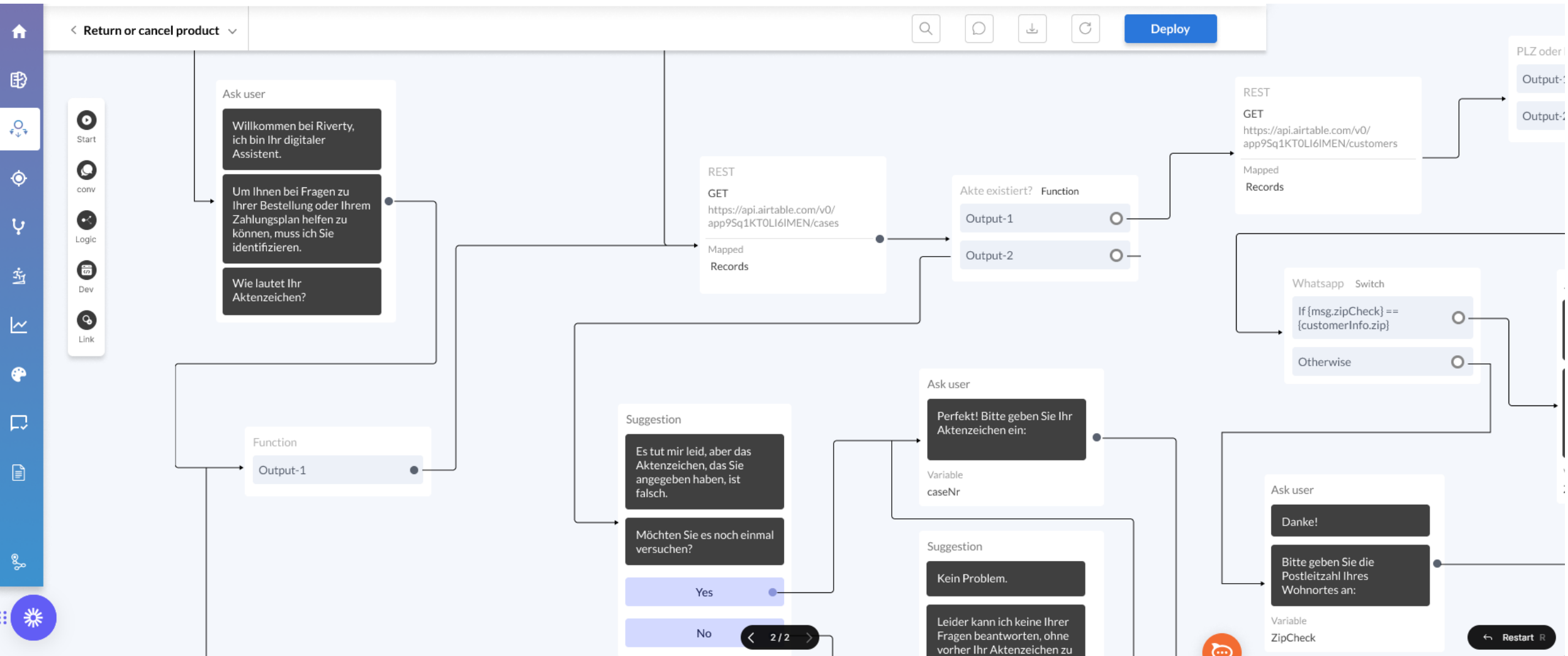
<h3>Refund request</h3> <p>Frequency</p> <p>Solves 20.38% of users queries</p> <p>Add flow</p>	<h3>Flight/Train Status or timetable</h3> <p>Frequency</p> <p>Solves 13% of users queries</p> <p>Add flow</p>	<h3>Refund Status</h3> <p>Frequency</p> <p>Solves 8.59% of users queries</p> <p>Add flow</p>
<h3>Change Ticket</h3> <p>Frequency</p> <p>Solves 8.42% of users queries</p> <p>Add flow</p>	<h3>Product or Travel card Selection</h3> <p>Frequency</p> <p>Solves 6.76% of users queries</p> <p>Add flow</p>	<h3>Create new power-up flows</h3> <p>Power-up flows are used to dynamically respond to your users' most common requests.</p>
<p>★ Add pre-built, industry-specific intents to your bot</p> <p>Add pre-built intents</p> <p>This feature will help you add industry preset data to your bot as intents and entities.</p>	<h3>To add power-ups to your bot</h3> <p>Schedule a call with one of our conversational design experts</p> <p>Schedule a call</p>	

How can power-up flows help my chatbot in delivering outstanding customer service?

The industry-specific flows allow you to add complex query resolution capabilities to your chatbot whilst saving time and effort.

- ### FAQ's
- How many power-up flows can I integrate to my bot?
 - Can I create my own power-up flow?
 - Do I need to have coding knowledge to build a power-up flow?

Automate the top 20 requests



DocBrain: Bringing the next Generation of Conversational Automation with Autonomous extraction

✦ Automation

LC/NC business process automation



Website extraction

Enter your Website URL and let our Auto Extraction do the rest.

✦ Autonomous

One click bot creation with automated knowledge base creation and updating



Go live

Wait just 24hrs for the AI-parser to extract relevant data and your ready to Go LIVE

✦ Intelligent

Deep learning framework



Enhance with power-up flows

Use our Drag and drop APIs to automate critical intent-oriented actions for improvement

✦ Agnostic

Omnichannel multilingual VAs for chat, email, and voice response automation



Auto-update

Use your website as a content repository that automatically updates conversational content.



Our Key Clients

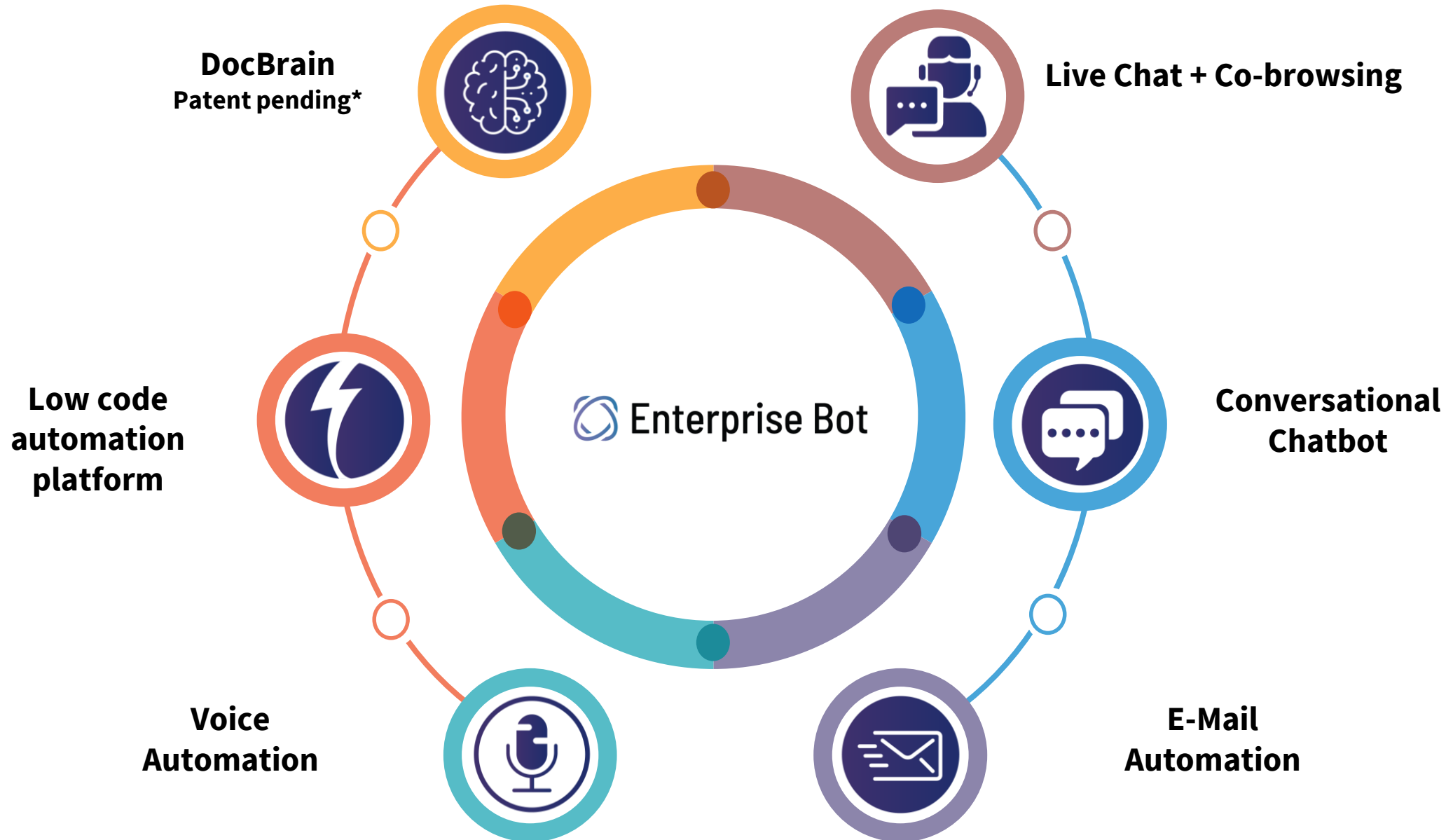
Strong domain experience: Banking, Insurance, Logistics, Retail & Travel

Our Partners

Enterprise Bot's automation suite





Leading omni-channel conversational AI for Enterprises



Highly
experienced,
global team



AI leadership
with an 88.3% avg.
accuracy rate



Over 5 million
conversations in
2021